

Steamfast™

MODEL

SF-540



DELUXE FABRIC STEAMER
OWNER'S GUIDE

IMPORTANT SAFETY INSTRUCTIONS



WARNING: To reduce risk of fire, electrical shock or injury, the following basic safety precautions should always be followed when using an electrical appliance.

WARNING: To reduce the risk of electrical shock, this appliance uses a grounded (three-pronged) plug. This plug will fit in a grounded wall outlet only one way. If the plug does not correctly fit in the outlet, contact a licensed electrician to install a proper outlet. DO NOT attempt to modify the plug or defeat this safety feature.

READ ALL INSTRUCTIONS BEFORE USE



DANGER

Any appliance is electrically live even when switched off. To reduce risk of electrical shock:

1. Always unplug power cord immediately after using.
2. Do not place or store unit where it can fall or be pulled into a sink or tub.
3. Do not place in, or drop into water or other liquid.
4. If unit falls into water, immediately unplug power cord. Do not reach into the water.



WARNING

To reduce risk of burns, electrocution, fire, or injury to persons:

1. Do not tamper with or modify this product in any way. The manufacturer assumes no responsibility for damage or injury caused by failure to follow these instructions, improper use, or unauthorized product modification. Any such actions will invalidate the product warranty.
2. Use Everyday Fabric Steamer only for its intended purpose as indicated in this manual.
3. If an extension cord is necessary, use a properly rated cord (15 ampere, 14 gauge). Use care to position extension cord where it is least likely to be damaged or tripped over during use.
4. Before plugging power cord into electrical outlet, be sure that all electrical information on rating label agrees with your power supply.
5. To reduce likelihood of circuit overload, DO NOT operate another high wattage appliance on the same circuit as this unit.
6. To protect against risk of electrical shock, do not immerse unit in water or other liquids. Do not use power cord as handle, let it hang over edges of counters, or be crimped or closed in doors.
7. Never yank power cord to disconnect from outlet; instead, grasp plug and pull to disconnect.
8. Do not operate unit with a damaged power cord or if the unit has been dropped or damaged. To avoid risk of electrical shock, do not disassemble unit; contact Steamfast Consumer Service for examination and repair. Incorrect reassembly can cause a risk of electrical shock when unit is used.
9. Close supervision is required for any appliance being used near children, pets and plants. Do not leave unit unattended while plugged in.
10. This unit is not intended for use by persons (including children) with reduced physical, sensory or mental capabilities, or lack of experience and knowledge, unless they have been

given supervision or instruction concerning use of the unit by a person responsible for their safety.

11. Do not use unit where aerosol-based products are being used, or where oxygen is being administered.
12. Unit is only meant to be used with recommended Everyday Fabric Steamer (model SF-407) accessories. Using other types of attachments may cause damage to unit or injury.
13. If Lighted On/Off Switch does not illuminate when unit is plugged in and Switch is set to "ON" position, unit is not operating normally. Immediately disconnect cord from power supply, then refer to troubleshooting guide on Page 13 of this manual for assistance.
14. Do not attempt to use unit without properly filling Water Tank / Water Reservoir.
15. When filling unit, only water should be used – other cleaning agents could damage unit or cause injury. Distilled or de-mineralized water is highly recommended, in order to minimize potential build-up of mineral deposits.
16. To reduce risk of contact with hot water emitting from Steam Nozzle, check appliance before each use by positioning it away from body and turning it on. Do not operate unit if Steam Nozzle is blocked.
17. Use caution when carrying unit up stairs or over obstacles, or when using unit on or near an uneven surface.
18. Burns can occur from touching hot plastic parts, hot water, or steam. Do not touch Steam Nozzle or attempt to connect any accessories while unit is in use. Use caution when you turn unit upside-down – there may be hot water inside.
19. When steaming any fabric for the first time, it is recommended that you consult the manufacturer's guidelines for the material being steamed. For items in question, test on an inconspicuous area before proceeding.
20. Synthetic materials (such as 100% nylon or polyester) are sensitive to heat, and may be damaged by exposure to hot steam. Steam is recommended for use only on natural fibers such as cotton, linen or wool, as well as nylon or polyester blends.
21. Do not allow power cord to touch hot surfaces during use. Loosely bundle cord when storing.
22. Always allow Everyday Fabric Steamer to cool (15 minutes for complete cooling) and empty Water Tank and Water Reservoir before storing.

This equipment may generate, use and/or radiate radio frequency energy that may cause harmful interference to radio communications. If this equipment does cause harmful interference to radio or television reception, which can be determined by turning the equipment off and on, the user is encouraged to contact Steamfast Consumer Service at 1-800-711-6617.

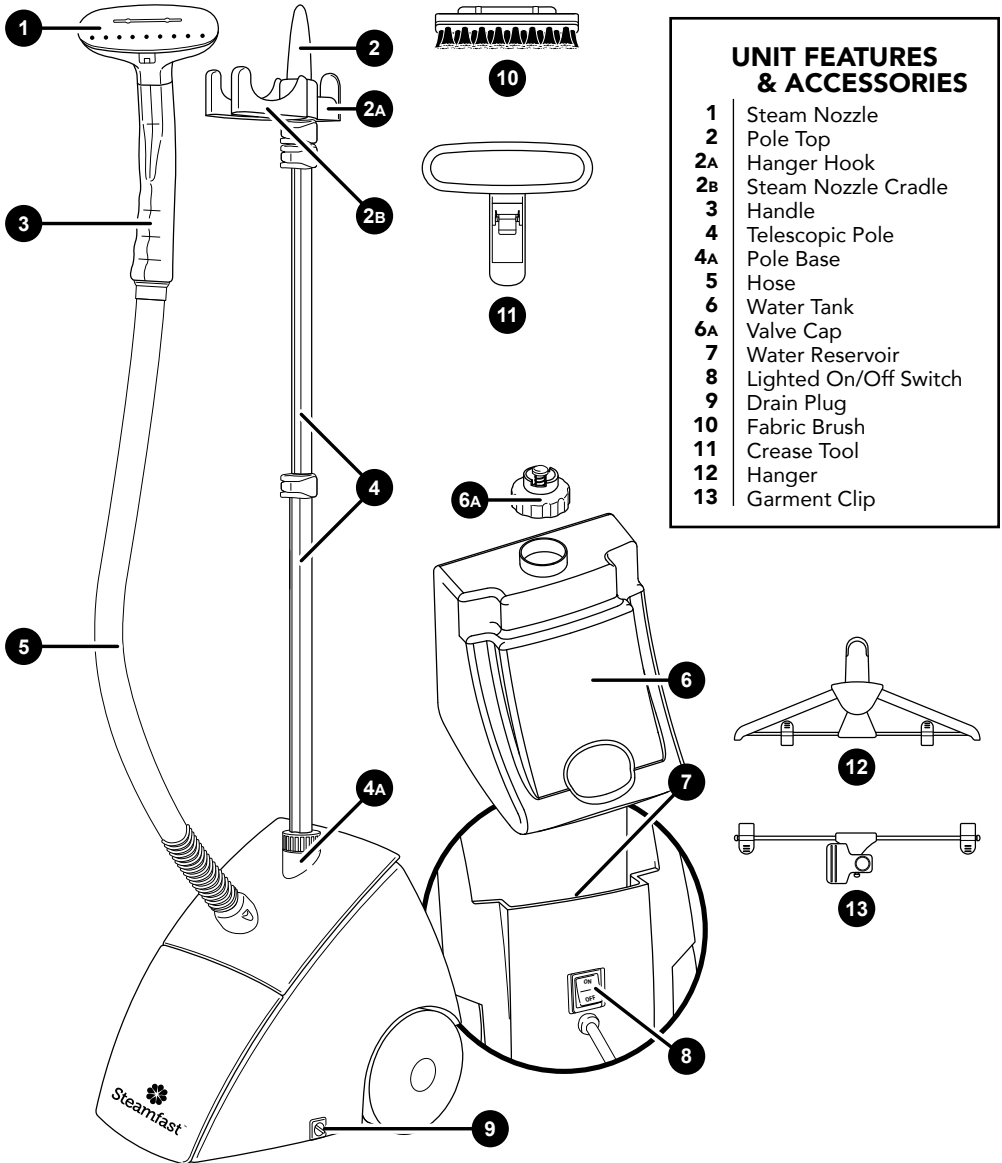
Please refer to our website for the most current version of our owner's guide.

Questions or comments?

- steamfast.com
- consumerservice@steamfast.com
- 1-800-711-6617

Speak your mind! We invite you to review this product online:
steamfast.com/reviews

The following features and accessories are included with your Deluxe Fabric Steamer. Carefully inspect the packing material for all parts listed below. To obtain possible missing parts, refer to **Product Support** on Page 14 of this manual for Consumer Service contact information.



UNIT FEATURES & ACCESSORIES

- 1 Steam Nozzle
- 2 Pole Top
- 2A Hanger Hook
- 2B Steam Nozzle Cradle
- 3 Handle
- 4 Telescopic Pole
- 4A Pole Base
- 5 Hose
- 6 Water Tank
- 6A Valve Cap
- 7 Water Reservoir
- 8 Lighted On/Off Switch
- 9 Drain Plug
- 10 Fabric Brush
- 11 Crease Tool
- 12 Hanger
- 13 Garment Clip

-
- The *Steam Nozzle* (1) emits the flow of hot, penetrating steam produced by the *Boiler*. The *Fabric Brush* connects to the *Steam Nozzle*.
 - The *Pole Top* (2) connects to the top section of the *Telescopic Pole*. The *Pole Top* is comprised of the *Steam Nozzle Cradle* and *Hanger Hook*.
 - The *Hanger Hook* (2A) supports the included *Hanger*. The *Hanger Hook* can alternatively support garments hung from any clean rust-free hanger.
 - The *Steam Nozzle Cradle* (2B) provides a safe and convenient place to hang the *Steam Nozzle* when not in use.
 - The *Handle* (3) is engineered to stay cool while providing maximum grip and comfort.
 - The *Telescopic Pole* (4) connects to the main unit at the *Pole Base*. The *Telescopic Pole* is divided into four sections, three of which can be extended and lowered to a variety of heights for optimal user comfort and convenient storage.
 - The *Pole Base* (4A) is the receptacle into which the *Telescopic Pole* is inserted and secured to the top of the main unit.
 - The *Hose* (5) directs steam flow from the main unit to the *Steam Nozzle*.
 - The *Water Tank* (6) is the container that holds water to be transferred into the *Water Reservoir*. The *Water Tank* is removable for convenient filling, up to a maximum capacity of 78 oz (2,307 ml).
 - The *Valve Cap* (6A) regulates the flow of water between the *Water Tank* and the *Water Reservoir*, and must be removed in order to fill the *Water Tank* with water.
 - The *Water Reservoir* (7) holds water before it is transferred to the internal heater and converted into steam.
 - The *Lighted On/Off Switch* (8) powers the unit on and off. When set to the "ON" position, it illuminates to provide a clear visual indication that the unit is receiving power.
 - The *Drain Plug* (9) is opened to easily empty the *Water Reservoir* of any remaining water.
 - The *Fabric Brush* (10) connects to the *Steam Nozzle* and is designed to brush away particles such as lint, hairs and loose threads.
 - The *Crease Tool* (11) connects to the *Steam Nozzle* and is designed to create crisp creases by gently "pinching" fabric against the *Steam Nozzle*.
 - The *Hanger* (12) connects to the *Pole Top* via the *Hanger Hook*, and is designed to support garments for easy, accessible steaming. The *Hanger* quickly collapses for convenient storage.
 - The *Garment Clip* (13) fastens to the *Telescopic Pole*, and is designed to grip the bottom of a garment that is hung from the *Hanger*. This will pull the garment taut, making it easier to steam out wrinkles and create crisp creases.

TELESCOPIC POLE

The Telescopic Pole is made up of four sections (FIGURE 1):

- TOP (SECTION 1)
- MIDDLE-TOP (SECTION 2)
- MIDDLE-BOTTOM (SECTION 3)
- BOTTOM (SECTION 4)

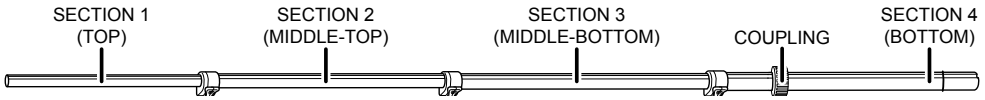


FIGURE 1

SECTIONS 1, 2 & 3 are adjustable in length. By using the three extension locks, these sections may be extended or retracted in order to achieve the desired length. Refer to **Adjusting Telescopic Pole** section on Page 7 for more details.

NOTE: SECTION 4 (BOTTOM) is the widest section of the Telescopic Pole. This section includes the COUPLING, which secures the Telescopic Pole to the Pole Base.

CONNECTING TELESCOPIC POLE

1. Locate COUPLING on SECTION 4 of Telescopic Pole.
2. Look down inside Pole Base, and locate two guide ridges (FIGURE 2-A). Align two guide grooves on Telescopic Pole (FIGURE 2-B) with guide ridges inside Pole Base.
3. With guide grooves aligned with guide ridges, insert SECTION 4 of Telescopic Pole into Pole Base (FIGURE 2-C).

NOTE: If you have trouble locating two guide ridges inside Pole Base, insert SECTION 4 of Telescopic Pole into Pole Base, then twist pole to properly align the guide grooves and guide ridges.

4. Slide COUPLING down over Pole Base, then screw clockwise to lock Telescopic Pole in place (FIGURE 2-D). Telescopic Pole should now be secured to the Pole Base.

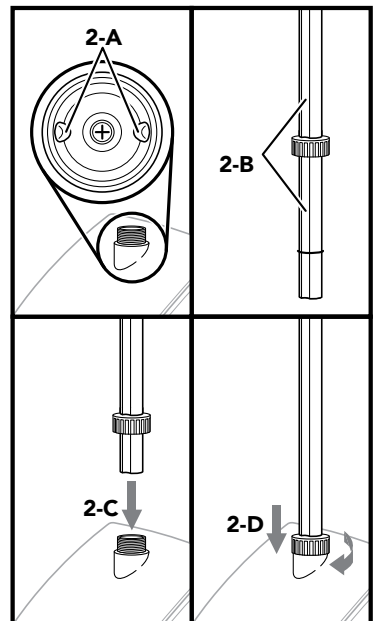
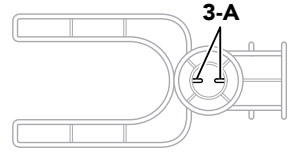


FIGURE 2

CONNECTING POLE TOP

1. Look at underside of Pole Top, and locate two guide tabs (FIGURE 3-A).
2. Align Pole Top guide tabs with guide grooves on SECTION 1 of Telescopic Pole.



NOTE: It is recommended to orient Pole Top so Nozzle Cradle faces forwards towards front of the unit.

3. Slide Pole Top onto SECTION 1 of Telescopic Pole (FIGURE 3-B). Press down firmly until Pole Top fits securely in place.

CAUTION: To prevent steam from causing bodily injury or damage to surfaces, always hang Steam Nozzle on Steam Nozzle Cradle when not in use. Do not lay Hose on the floor as condensation may build up, causing unwanted water droplets in the steam.

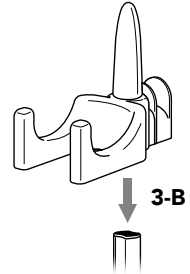


FIGURE 3

ADJUSTING TELESCOPIC POLE

To adjust the length of SECTIONS 1, 2 & 3 of the Telescopic Pole:

1. Release extension lock directly below SECTION 1 by swinging hinge outward as shown. SECTION 1 can then be extended / retracted (FIGURE 4).
2. Once SECTION 1 is at desired length, close hinge to once again secure extension lock.
3. Repeat **STEPS 1 & 2** for SECTIONS 2 & 3 of the Telescopic Pole, using the extension lock directly below each of those sections.

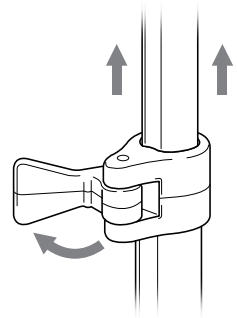


FIGURE 4

NOTE: It is recommended to extend Telescopic Pole to its full height during steamer operation; this will ensure optimal steam flow through the Hose.

CONNECTING HANGER

1. Locate vertical arm on top of Hanger. Locate the side with a raised rim.
2. Align Hanger arm with Pole Top Hanger Hook. Slot raised rim around top of Hanger Hook.
3. Press downward gently to lock Hanger onto Hanger Hook (FIGURE 5).

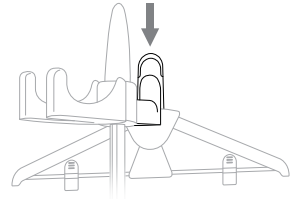


FIGURE 5

CONNECTING GARMENT CLIP

NOTE: Telescopic Pole should be extended to maximum height (see Page 7 for details).

1. Align Garment Clip with Telescopic Pole. Which section of the pole you choose will depend on the length of the garment you are steaming.
2. Pinch middle clasp of Garment Clip open.
3. Place open clasp around Telescopic Pole.
4. Release clasp to close it around Telescopic Pole.

CONNECTING FABRIC BRUSH

1. Make sure Lighted On/Off Switch is set to "OFF" position, and that unit is not emitting any steam.

CAUTION: Do not try to connect Fabric Brush while unit is emitting steam, as this can cause burns and injury.

2. Align long peg on back of Fabric Brush with corresponding slot on face of Steam Nozzle.
3. Press Fabric Brush firmly onto Steam Nozzle, until it fits snugly and firmly in place.

CONNECTING CREASE TOOL

1. Locate hinged adapter on Crease Tool; note open slot on top (FIGURE 6-A).
2. Position Crease Tool so that slot on top of hinged adapter aligns with tab on bottom of Steam Nozzle.
3. Press Crease Tool firmly onto Steam Nozzle, ensuring tab fits into slot (FIGURE 6-B).

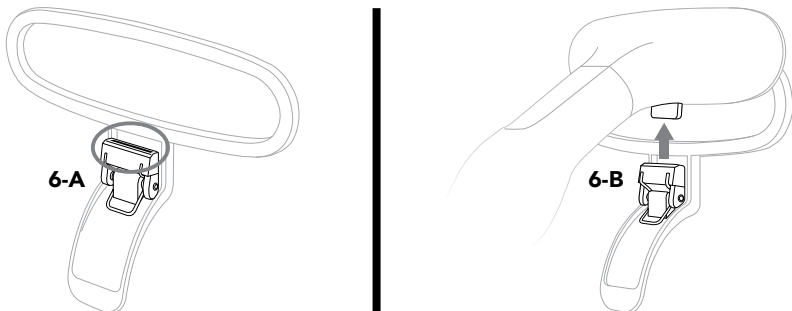


FIGURE 6

FILLING WITH WATER

1. Remove Water Tank from main unit.
2. Holding Water Tank upside-down, unscrew and remove Valve Cap by rotating it in a counter-clockwise direction (FIGURE 7-A).
3. Fill Water Tank with water through Valve Cap hole. At full capacity, the Water Tank holds 78 oz (2,307 ml) of water, and will provide a continuous steam time of approximately 80 minutes. For quick steaming tasks, a smaller amount of water can be used.

NOTE: In order to minimize potential mineral build-up and prolong the life of your Deluxe Fabric Steamer, distilled or de-mineralized water is recommended.

CAUTION: Only water and vinegar should be used in unit – other chemicals or cleaning agents may cause internal damage. Do not attempt to substitute any other water tank for the one designed for use with this unit.

4. Replace Valve Cap by rotating it in a clockwise direction.
5. Place Water Tank back onto main unit (FIGURE 7-B). The sound of water flowing from Water Tank into Water Reservoir should be audible for a short period of time.

NOTE: Water Tank can be removed and refilled at any time during operation – there is no need to turn unit off or allow any cooling period.

IMPORTANT: Do not attempt to operate unit with an empty Water Tank.

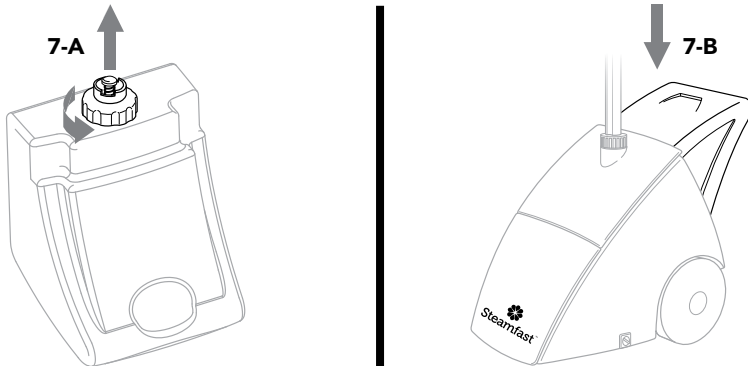


FIGURE 7

GENERAL OPERATION

NOTE: Be sure that Water Tank has been filled and, if desired, the Fabric Brush or Crease Tool is connected before following these steps.

1. For first-time use, remove protective plastic cover that is shipped on electrical plug. Plug power cord into a convenient electrical outlet.

CAUTION: This unit uses a grounded electrical plug with three prongs. This plug will fit into a wall outlet only one way. If the plug does not correctly fit in the outlet, contact a licensed electrician to install a proper outlet. Do not attempt to alter plug or circumvent this safety feature in any way.

2. Set Lighted On/Off Switch to "ON" position, and verify that switch is illuminated.
3. After approximately 45 seconds of heating time, unit will begin producing a flow of steam from Steam Nozzle.

NOTE: It is common for the unit to produce gurgling sounds and small amounts of water during the first few minutes of steaming. This is due to water condensation inside cold Hose, and should be reduced as the Hose heats up.

4. Once steam flow is steady and excess condensation has been removed from Hose, you may proceed with your steaming tasks. Refer to **Fabric Steaming** section on Page 11 for more information about steaming garments and other fabrics.

CAUTION: Always be sure that Steam Nozzle is pointed in a safe direction (away from yourself, other people, pets and plants) when steaming.

5. When you are finished using the Deluxe Fabric Steamer, immediately set Lighted On/Off Switch to "OFF" position and unplug power cord from electrical outlet. Refer to **Storage & Care** on Page 12 for proper cleaning and storage procedures.

USING GARMENT CLIP

1. Make sure Garment Clip is properly connected to Telescopic Pole (refer to Page 8 for details).
2. Hang garment on unit, using either the Hanger or Hanger Hook.
3. Open one of the clasps and insert one side of the garment. Repeat for other clasp/side.
4. Slide Garment Clip down towards bottom of Telescopic Pole, until pants are pulled taut.
5. Proceed with steaming. Using the Crease Tool is recommended for creating crisp creases.

USING CREASE TOOL

1. Make sure Crease Tool is properly connected to Steam Nozzle (refer to Page 8 for details).
2. Hang garment on unit, using either the Hanger or Hanger Hook.
3. Press in on lever to open Crease Tool.
4. Insert edge of fabric between face of Steam Nozzle and Crease Tool. Release lever to close Crease Tool.
5. While pulling on bottom of garment to stretch it taut (either by hand or using the Garment Clip), slowly pull Steam Nozzle downward along edge of fabric.

NOTE: It is recommended to start at top of garment and pull Steam Nozzle downward.

6. Press in on lever again to open Crease Tool and release fabric. Repeat **STEPS 3-6** as necessary.

FABRIC STEAMING

STEAMING GARMENTS:

1. To expand Hanger for use, fold the two arms upward until they lock into place. A garment may now be placed on the Hanger.
2. Alternatively, place garment on a clean, rust-free clothes hanger. Place hanger (with garment) around Hanger Hook (FIGURE 8).

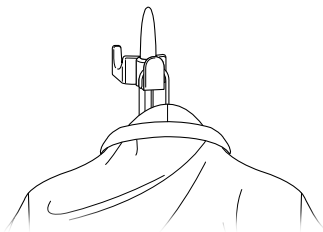


FIGURE 8

CAUTION: Use care when handling garments hanging on unit. Pulling on the garment with too much force may cause the unit to tip over.

3. Direct Steam Nozzle towards bottom of garment. Steam will rise along inside and outside of fabric, removing wrinkles. Slowly slide Steam Nozzle vertically, from bottom to top of garment (FIGURE 9).

NOTE: Do not allow kinks to form in Hose at any time during use.

4. Direct Steam Nozzle away from garment and smooth fabric with your free hand.
5. Repeat STEPS 3 & 4 as necessary until fabric is fresh and wrinkle-free.

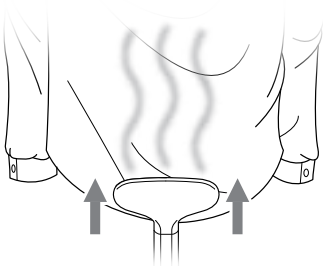


FIGURE 9

GENERAL STEAMING TIPS:

- For most effective results, hold Steam Nozzle within 1/2" of fabrics, or press it directly against surfaces.
- Curtains and draperies can be steamed while still hanging.
- To remove wrinkles from towels, handkerchiefs and napkins, drape them over a rod or towel rack and gently steam them.
- Heavier fabrics may require repeated steaming to achieve desired results.
- To remove exceptionally stubborn wrinkles, steam both sides of fabric.
- Be especially careful when steaming any delicate fabrics that may be damaged by heat or water spotting.
- To sanitize a fabric, hold Steam Nozzle within 1/2 inch of a single area for at least 5 seconds. Use caution when doing this on more delicate fabrics.
- To remove particles like lint, hairs and loose threads, connect the Fabric Brush to the Steam Nozzle.

PROPER STORAGE

Preparing your Deluxe Fabric Steamer for storage is quick and simple. When you have finished your steaming tasks, follow the steps listed below.

1. Set Lighted On/Off Switch to “OFF” position, and unplug power cord from electrical outlet.
2. Allow unit to cool (15 minutes for complete cooling).
3. Bring unit to a convenient sink or tub.
4. Remove Water Tank from unit. Unscrew Valve Cap and drain all remaining water from Water Tank. Replace Valve Cap when finished.
5. Open Drain Plug and drain all remaining water from Water Reservoir to prevent overflowing during your next use. Securely replace Drain Plug and place empty Water Tank back onto main unit.
6. For storage convenience, you may wish to collapse Telescopic Pole to its most compact height (refer to Page 7 for details). You may also collapse the Hanger by pressing the center button and folding the arms down.
7. Loosely bundle power cord and store Deluxe Fabric Steamer in a cool dry location.

CARE & MAINTENANCE

A common maintenance need for steam appliances is the removal of build-up caused by high mineral content in many municipal water supplies. **The best way to minimize mineral build-up is to use distilled or de-mineralized water during every use of your Deluxe Fabric Steamer.**

If distilled or de-mineralized water is unavailable, regular tap water may be used. However, the resulting mineral build-up may limit the effectiveness and reduce the overall life of your Deluxe Fabric Steamer. To prevent this, it is recommended to de-mineralize the boiler after 30-40 uses.

To remove mineral build-up:

1. Set Lighted On/Off Switch to “OFF” position and unplug power cord from electrical outlet.
2. Allow unit to cool (15 minutes for complete cooling).
3. Bring unit to a convenient sink or tub.
4. Remove Water Tank from unit. Unscrew Valve Cap and drain all remaining water from Water Tank.
5. Open Drain Plug and drain all remaining water from Water Reservoir. Securely replace Drain Plug.
6. Fill a measuring cup (**not included**) with 12 oz (355 ml) vinegar.
7. Pour vinegar into Water Tank, and replace Valve Cap. Place Water Tank back onto main unit.
8. Allow vinegar to flow into Water Reservoir / Boiler and soak for 30-40 minutes.
9. Plug power cord into an electrical outlet and set Lighted On/Off Switch to “ON” position. Allow unit to steam until the Water Tank is emptied. **CAUTION: Do not allow unit to continue running with an empty Water Tank.** Set Lighted On/Off Switch to “OFF” position.
10. Open Drain Plug and drain any remaining cleaning solution from Water Reservoir. **CAUTION: Leftover solution will still be hot.** Securely replace Drain Plug.
11. Pour 8 oz (236 ml) of warm tap water into Water Tank and place tank onto main unit. Open Drain Plug and drain water from unit, then securely replace plug.
12. When finished, unplug power cord from electrical outlet. Continue with normal storage procedure, as outlined in **Proper Storage** section above.

| PROBLEM | POSSIBLE CAUSE | SOLUTION |
|--|---|--|
| Unit fails to heat up. Lighted On/Off Switch DOES NOT illuminate when set to "ON" position. | Unit is not plugged in. | Plug power cord into electrical outlet. |
| | Household circuit breaker / ground fault interrupter has tripped or blown a fuse. | Reset circuit breaker / ground fault interrupter, or replace fuse. For assistance, contact a licensed electrician. |
| | Unit is damaged or otherwise in need of repair. | Immediately cease usage and unplug. Contact Consumer Service for assistance (see below for details). |
| Unit fails to heat up. Lighted On/Off Switch DOES illuminate when set to "ON" position. NOTE: Always allow sufficient time for unit to heat up and begin producing steam. | No water in unit. | Refer to Filling With Water procedure on Page 9 to fill unit with water. |
| | Mineral build-up in unit. | Refer to Mineral Build-up section on Page 12 for cleaning procedure. |
| | Unit is damaged or otherwise in need of repair. | Immediately cease usage and unplug. Contact Consumer Service for assistance (see below for details). |
| Excessive gurgling in Hose and Steam Nozzle / water drips from Steam Nozzle. | Condensation build-up inside of Hose. | Some gurgling is a natural effect of the steaming process. For excessive gurgling or dripping water, point Steam Nozzle downward and shake thoroughly to remove excess water droplets. |
| Steam output is weak or intermittent. | Water level in Water Reservoir is running low. | Refer to Filling With Water procedure on Page 9 to refill unit with water. |
| | Mineral build-up in unit. | Refer to Mineral Build-up section on Page 12 for cleaning procedure. |

CONSUMER SERVICES

For problems with your Everyday Fabric Steamer, please refer to the troubleshooting guide located above. Additional inquiries should be directed to our consumer support services through our Web site, www.steamfast.com.

If you do not have internet access, you may also contact our Consumer Service Department by telephone, at **1-800-711-6617**.

NOTE: In order for our Consumer Service representatives to help you as quickly and efficiently as possible, please have the following information ready before calling:

- Purchase information (where and when you purchased this product)
- Copy of purchase receipt / proof of purchase
- Product serial number (located near electrical specification label on bottom of unit)
- Date code (4-digit number located on electrical specification label on bottom of unit)

For information regarding your 2 year limited warranty, refer to Page 15 of this manual.

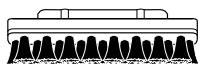
PARTS & ACCESSORIES

When ordering replacement parts and accessories for your Deluxe Fabric Steamer, you may refer to the part numbers below. Parts and accessories may be ordered through our Website:

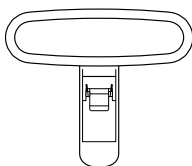
www.steamfast.com

You may also contact Consumer Service directly:

consumerservice@steamfast.com or **1-800-711-6617**



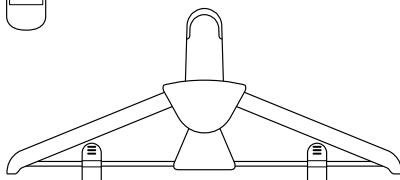
FABRIC BRUSH
A540-001R-



CREASE TOOL
A540-002R-



GARMENT CLIP
A540-004R-



HANGER
A540-003R-

PRODUCT SPECIFICATIONS

| | |
|------------------------------|---|
| MODEL | SF-540 |
| VOLTAGE | 120V~ |
| WATTAGE | 1500W |
| AMPERAGE | 12.5A |
| WATER CAPACITY | 78 OZ (2,307 ML) |
| HEATING TIME | 45 SEC (APPROXIMATE) |
| CONTINUOUS STEAM TIME | 80 MIN (APPROXIMATE) |
| UNIT WEIGHT | 11.4 LBS. (5.2 KG.) |
| UNIT DIMENSIONS | 13.9" (35.3 CM) x 9.25" (23.5 CM) x 65.75" (167 CM) |
| POWER CORD LENGTH | 6.2' (190.0 CM.) |

2-YEAR LIMITED WARRANTY

What is covered

Steamfast, a division of Vornado Air, LLC ("Steamfast"). Subject to the terms and conditions of this 2-Year Limited Warranty ("Warranty") as set forth below, Steamfast warrants to the original consumer or purchaser ("Buyer") that this Steamfast®-branded steam product, excluding all accessories and attachments, (the "Product") is to be free from defects in material and workmanship for a period of two (2) years from the date of purchase when used and maintained in accordance with the Owner's Guide (the "Warranty Period"). In the event Buyer notifies Steamfast of a defect in the Product within the Warranty Period, Steamfast will replace the Product and/or defective component parts, as applicable and necessary. Any such replacement will be made at no charge to Buyer for parts or labor, provided that Buyer shall be responsible for all shipping and transportation costs associated with returning the Product to Steamfast for inspection and covered replacement.

What is not covered

This Warranty shall not be applicable to damage or loss caused in whole or in part by:

- Repairs, modifications or alterations to the Product by anyone other than Steamfast.
- Use or operation of the Product outside the permitted or intended uses described by Steamfast in the Owner's Guide, or other careless operation, handling, misuse, or abuse of the Product.
- Lack of proper maintenance or timely cleaning of the Product as specified in the Owner's Guide.
- Use of the Product other than for normal household purposes.
- Normal wear and tear.
- Used consumable parts, accessories and attachments, including, but not limited to, brushes, hangers, scrub pads and mop pads.
- Use of parts and accessories other than those produced or recommended by Steamfast.
- Cosmetic damage, such as scratches, nicks and dents.
- Damage caused by accident, water, flood, fire or other acts of nature or external causes.

Warranty limitations and exclusions

- NO OTHER EXPRESS WARRANTY IS GIVEN BY STEAMFAST TO BUYER AND NO REPRESENTATIVE HAS THE AUTHORITY TO MAKE REPRESENTATIONS OTHER THAN THOSE PROVIDED HEREIN.
- THERE ARE NO WARRANTIES WHICH EXTEND BEYOND THE DESCRIPTION ON THE FACE HEREOF AND ALL IMPLIED WARRANTIES, SPECIFICALLY THE IMPLIED WARRANTIES OF MERCHANTABILITY AND FITNESS FOR A PARTICULAR PURPOSE, ARE HEREBY EXPRESSLY LIMITED TO THE DURATION OF THE WARRANTY PERIOD, UNLESS A SHORTER PERIOD IS PERMITTED BY LAW.
- STEAMFAST'S REPLACEMENT OF THE PRODUCT IS THE EXCLUSIVE REMEDY. UNDER NO CIRCUMSTANCES SHALL STEAMFAST BE LIABLE TO BUYER OR ANY OTHER PERSON FOR ANY INCIDENTAL, SPECIAL, CONSEQUENTIAL, OR OTHER DAMAGES, EVEN IF STEAMFAST HAS BEEN ADVISED OF OR COULD REASONABLY FORESEE THE POSSIBILITY OF SUCH DAMAGES, INCLUDING, BUT NOT LIMITED TO, LOSS OF PROFITS OR DAMAGE, WHETHER ARISING OUT OF BREACH OF WARRANTY, BREACH OF CONTRACT OR UNDER ANY OTHER THEORY OF LAW.

- THIS WARRANTY GIVES BUYER SPECIFIC LEGAL RIGHTS. BUYER MAY ALSO HAVE OTHER RIGHTS WHICH VARY FROM STATE-TO-STATE. SOME STATES DO NOT ALLOW THE EXCLUSION OR LIMITATION OF INCIDENTAL OR CONSEQUENTIAL DAMAGES, AND SOME STATES DO NOT ALLOW LIMITATIONS ON HOW LONG AN IMPLIED WARRANTY LASTS, SO THE ABOVE LIMITATION OR EXCLUSION MAY NOT APPLY TO BUYER.

How do you register the Warranty

Buyer must complete an application to register this Warranty within sixty (60) days following date of purchase. Buyer may either visit Steamfast's website at www.steamfast.com and complete an online application or mail a completed application to Steamfast. Failure to register this Warranty within sixty (60) days following date of purchase will render this Warranty null and void.

Warranty service

For warranty service, call 1-800-711-6617 or email consumerservice@steamfast.com to obtain a Return Authorization ("RA") form. Include the Product model number and serial number, as well as Buyer's name, address, city, state, zip code and phone number when contacting Steamfast for warranty service. Buyer may be required to provide the original sales receipt for purposes of verifying date of purchase. After receiving the RA form, the Product must be shipped, postage prepaid by Buyer, to:

Steamfast
Attn: Warranty & Repair
415 E. 13th Street
Andover, KS 67002

To assure proper handling, packages must be clearly marked with the RA number. Packages not clearly marked with the RA number may be refused at the receiving dock.

Important: After receiving return authorization, carefully pack the Product to avoid damage in shipping. Damage in shipping is not covered by the Warranty and shall be the sole responsibility of Buyer. Damage or loss not covered by this Warranty or occurring outside the Warranty Period will require a fee to cover the cost of handling and shipping. All such fees and costs shall be the sole responsibility of Buyer.

Please allow at least 1-2 weeks for return of the Product after it is received by Steamfast. For ease of recordkeeping, it is recommended that Buyer staple or attached the original sales receipt to this Owner's Guide and record the Product serial number (located on the Product specifications decal) here:

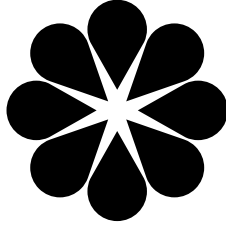
© 2018 Vornado Air, LLC • Andover, KS 67002

Specifications subject to change without notice. Steamfast® is a trademark owned by Vornado Air, LLC.

Manufactured in China.

Steamfast Consumer Service W: www.steamfast.com • P: 1-800-711-6617 •

E: consumerservice@steamfast.com



SteamfastTM

Steamfast

415 East 13th, Andover, KS 67002

1-800-711-6617 | steamfast.com | consumerservice@steamfast.com