

Steamfast™

MODEL

SF-547



STAND GARMENT STEAMER OWNER'S GUIDE

Guía Del Propietario Del Vaporizador de Prendas de Vestir
Guide D'utilisation – Stand Vêtement Steamer

IMPORTANT SAFETY INSTRUCTIONS

This owner's guide and any additional inserts are considered part of the product. They contain important information about safety, use, and disposal. Before using the product, please familiarize yourself with all operating and safety instructions. Please keep all documents for future reference and pass these documents on, together with the product, to any future owner. See our website for the most current version of this owner's guide.

INTENDED USE: This product is intended to be used indoors for the steaming of garments and other fabrics in the United States and/or Canada. This product is not intended for commercial or industrial uses. The manufacturer assumes no responsibility for damage or injury due to unauthorized use or product modification. Failure to follow these directions will void the product warranty.

WARNING: Risk to Children and Impaired Persons. Supervision is required during the installation, operation, cleaning and maintenance of this product by children under age 12 and anyone with reduced physical, sensory or mental capabilities. Children should be supervised to ensure that they do not play with the appliance, its parts and packaging material.

Directions to reduce risk of fire, electrical shock, and injury:

1. Read all instructions before use.
2. Use caution when handling this steam unit. Burns could occur from touching hot metal parts, hot water, or steam. Use special care to avoid contact with hot water when turning the product upside down to empty the reservoir.
3. To reduce the risk of contact with hot water, test whether steam is ready before each use while carefully holding the product away from your body. If no steam appears, wait a few more minutes and test again. Do not look into the appliance, use your hands or other objects to check for steam.
4. Do not leave appliance unattended while connected.
5. To reduce the risk of electric shock, do not immerse the appliance in water or other liquids.
6. Always disconnect appliance from electrical outlet when filling with water or emptying, and when not in use.
7. Do not allow cord to touch hot surfaces. Let appliance cool completely before putting away. Loop cord loosely around appliance when storing.
8. Never yank cord to disconnect from outlet. Instead, grasp just the plug and pull to disconnect.
9. Do not operate appliance with a damaged cord, or if the appliance has been dropped or damaged. To reduce the risk of electric shock, do not disassemble or attempt to repair the appliance. All repairs must be performed by a qualified service professional. Incorrect reassembly or repair could cause a risk of fire, electric shock, or injury when the appliance is used.
10. A loose fit between wall outlet (receptacle) and plug may cause overheating and distortion of the plug. Discontinue use of the product in this outlet. Contact a qualified electrician to replace loose or worn outlets.
11. To reduce the likelihood of circuit overload, do not operate another high wattage appliance on the same circuit.

-
12. If an extension cord is absolutely necessary, a 15 amp rated cord should be used. Cords rated for less amperage may overheat. Care should be taken to arrange the cord so that the cord cannot be pulled or tripped over.
 13. To reduce the risk of electrical shock, this appliance has a polarized plug (one blade is wider than the other.) This plug will fit in a polarized outlet only one way. If the plug does not fit fully in the outlet, reverse the plug. If it still does not fit, contact a qualified electrician. Do not change the plug in any way.

WARNING: Changes or modifications to this unit not expressly approved by the party responsible for compliance could void the user's authority to operate the equipment.

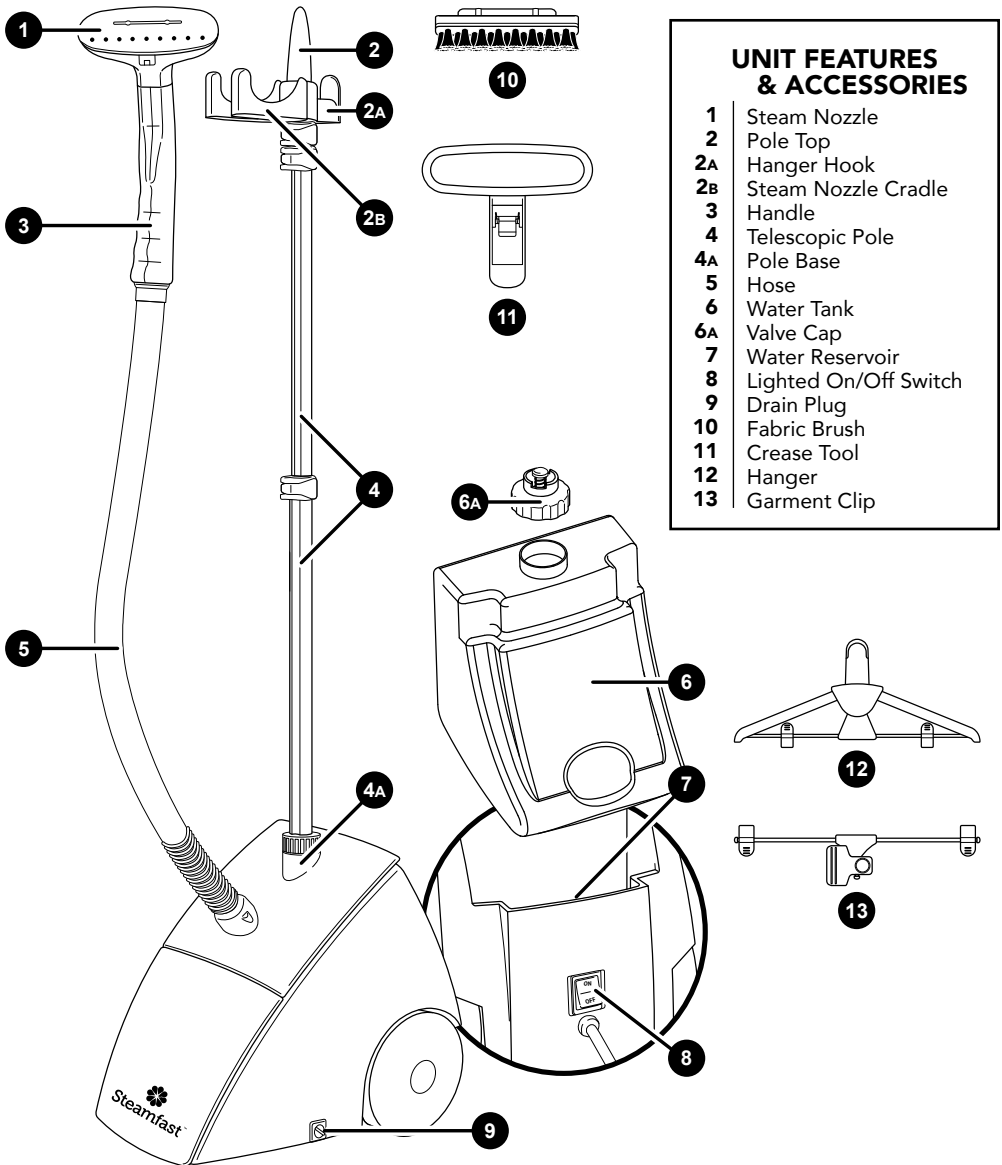
SAVE THESE INSTRUCTIONS

Questions or comments?

- steamfast.com
- consumerservice@steamfast.com
- 1-800-711-6617

Speak your mind! We invite you to review this product online:
steamfast.com/reviews

The following features and accessories are included with your Stand Garment Steamer. Carefully inspect the packing material for all parts listed below. To obtain possible missing parts, refer to **Product Support** on Page 14 of this manual for Consumer Service contact information.



UNIT FEATURES & ACCESSORIES

- 1 Steam Nozzle
- 2 Pole Top
- 2A Hanger Hook
- 2B Steam Nozzle Cradle
- 3 Handle
- 4 Telescopic Pole
- 4A Pole Base
- 5 Hose
- 6 Water Tank
- 6A Valve Cap
- 7 Water Reservoir
- 8 Lighted On/Off Switch
- 9 Drain Plug
- 10 Fabric Brush
- 11 Crease Tool
- 12 Hanger
- 13 Garment Clip

-
- The *Steam Nozzle* (1) emits the flow of hot, penetrating steam produced by the *Boiler*. The *Fabric Brush* connects to the *Steam Nozzle*.
 - The *Pole Top* (2) connects to the top section of the *Telescopic Pole*. The *Pole Top* is comprised of the *Steam Nozzle Cradle* and *Hanger Hook*.
 - The *Hanger Hook* (2A) supports the included *Hanger*. The *Hanger Hook* can alternatively support garments hung from any clean rust-free hanger.
 - The *Steam Nozzle Cradle* (2B) provides a safe and convenient place to hang the *Steam Nozzle* when not in use.
 - The *Handle* (3) is engineered to stay cool while providing maximum grip and comfort.
 - The *Telescopic Pole* (4) connects to the main unit at the *Pole Base*. The *Telescopic Pole* is divided into four sections, three of which can be extended and lowered to a variety of heights for optimal user comfort and convenient storage.
 - The *Pole Base* (4A) is the receptacle into which the *Telescopic Pole* is inserted and secured to the top of the main unit.
 - The *Hose* (5) directs steam flow from the main unit to the *Steam Nozzle*.
 - The *Water Tank* (6) is the container that holds water to be transferred into the *Water Reservoir*. The *Water Tank* is removable for convenient filling, up to a maximum capacity of 78 oz (2,307 ml).
 - The *Valve Cap* (6A) regulates the flow of water between the *Water Tank* and the *Water Reservoir*, and must be removed in order to fill the *Water Tank* with water.
 - The *Water Reservoir* (7) holds water before it is transferred to the internal heater and converted into steam.
 - The *Lighted On/Off Switch* (8) powers the unit on and off. When set to the "ON" position, it illuminates to provide a clear visual indication that the unit is receiving power.
 - The *Drain Plug* (9) is opened to easily empty the *Water Reservoir* of any remaining water.
 - The *Fabric Brush* (10) connects to the *Steam Nozzle* and is designed to brush away particles such as lint, hairs and loose threads.
 - The *Crease Tool* (11) connects to the *Steam Nozzle* and is designed to create crisp creases by gently "pinching" fabric against the *Steam Nozzle*.
 - The *Hanger* (12) connects to the *Pole Top* via the *Hanger Hook*, and is designed to support garments for easy, accessible steaming. The *Hanger* quickly collapses for convenient storage.
 - The *Garment Clip* (13) fastens to the *Telescopic Pole*, and is designed to grip the bottom of a garment that is hung from the *Hanger*. This will pull the garment taut, making it easier to steam out wrinkles and create crisp creases.

TELESCOPIC POLE

The Telescopic Pole is made up of four sections (FIGURE 1):

- TOP (SECTION 1)
- MIDDLE-TOP (SECTION 2)
- MIDDLE-BOTTOM (SECTION 3)
- BOTTOM (SECTION 4)

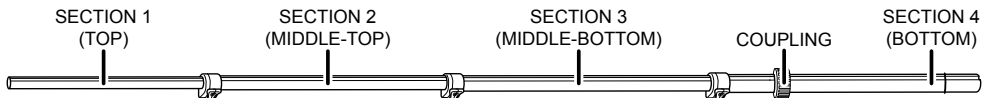


FIGURE 1

SECTIONS 1, 2 & 3 are adjustable in length. By using the three extension locks, these sections may be extended or retracted in order to achieve the desired length. Refer to **Adjusting Telescopic Pole** section on Page 7 for more details.

NOTE: SECTION 4 (BOTTOM) is the widest section of the Telescopic Pole. This section includes the COUPLING, which secures the Telescopic Pole to the Pole Base.

CONNECTING TELESCOPIC POLE

1. Locate COUPLING on SECTION 4 of Telescopic Pole.
2. Look down inside Pole Base, and locate two guide ridges (FIGURE 2-A). Align two guide grooves on Telescopic Pole (FIGURE 2-B) with guide ridges inside Pole Base.
3. With guide grooves aligned with guide ridges, insert SECTION 4 of Telescopic Pole into Pole Base (FIGURE 2-C).

NOTE: If you have trouble locating two guide ridges inside Pole Base, insert SECTION 4 of Telescopic Pole into Pole Base, then twist pole to properly align the guide grooves and guide ridges.

4. Slide COUPLING down over Pole Base, then screw clockwise to lock Telescopic Pole in place (FIGURE 2-D). Telescopic Pole should now be secured to the Pole Base.

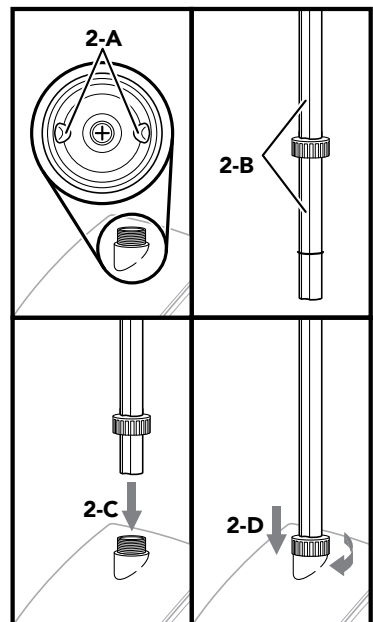
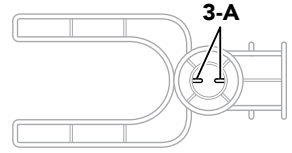


FIGURE 2

CONNECTING POLE TOP

1. Look at underside of Pole Top, and locate two guide tabs (FIGURE 3-A).
2. Align Pole Top guide tabs with guide grooves on SECTION 1 of Telescopic Pole.



NOTE: It is recommended to orient Pole Top so Nozzle Cradle faces forwards towards front of the unit.

3. Slide Pole Top onto SECTION 1 of Telescopic Pole (FIGURE 3-B). Press down firmly until Pole Top fits securely in place.

CAUTION: To prevent steam from causing bodily injury or damage to surfaces, always hang Steam Nozzle on Steam Nozzle Cradle when not in use. Do not lay Hose on the floor as condensation may build up, causing unwanted water droplets in the steam.

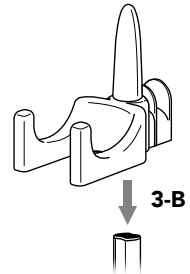


FIGURE 3

ADJUSTING TELESCOPIC POLE

To adjust the length of SECTIONS 1, 2 & 3 of the Telescopic Pole:

1. Release extension lock directly below SECTION 1 by swinging hinge outward as shown. SECTION 1 can then be extended / retracted (FIGURE 4).
2. Once SECTION 1 is at desired length, close hinge to once again secure extension lock.
3. Repeat **STEPS 1 & 2** for SECTIONS 2 & 3 of the Telescopic Pole, using the extension lock directly below each of those sections.

NOTE: It is recommended to extend Telescopic Pole to its full height during steamer operation; this will ensure optimal steam flow through the Hose.

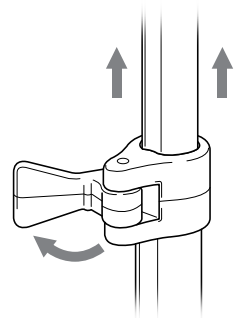


FIGURE 4

CONNECTING HANGER

1. Locate vertical arm on top of Hanger. Locate the side with a raised rim.
2. Align Hanger arm with Pole Top Hanger Hook. Slot raised rim around top of Hanger Hook.
3. Press downward gently to lock Hanger onto Hanger Hook (FIGURE 5).

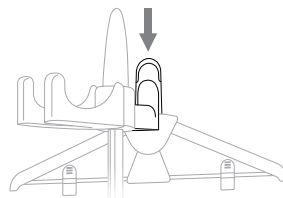


FIGURE 5

CONNECTING GARMENT CLIP

NOTE: Telescopic Pole should be extended to maximum height (see Page 7 for details).

1. Align Garment Clip with Telescopic Pole. Which section of the pole you choose will depend on the length of the garment you are steaming.
2. Pinch middle clasp of Garment Clip open.
3. Place open clasp around Telescopic Pole.
4. Release clasp to close it around Telescopic Pole.

CONNECTING FABRIC BRUSH

1. Make sure Lighted On/Off Switch is set to "OFF" position, and that unit is not emitting any steam.

CAUTION: Do not try to connect Fabric Brush while unit is emitting steam, as this can cause burns and injury.

2. Align long peg on back of Fabric Brush with corresponding slot on face of Steam Nozzle.
3. Press Fabric Brush firmly onto Steam Nozzle, until it fits snugly and firmly in place.

CONNECTING CREASE TOOL

1. Locate hinged adapter on Crease Tool; note open slot on top (FIGURE 6-A).
2. Position Crease Tool so that slot on top of hinged adapter aligns with tab on bottom of Steam Nozzle.
3. Press Crease Tool firmly onto Steam Nozzle, ensuring tab fits into slot (FIGURE 6-B).

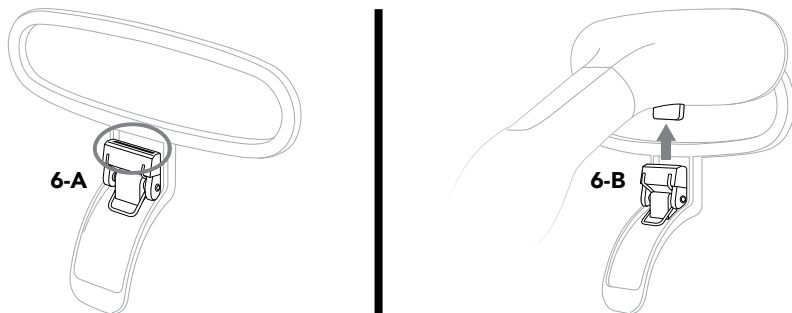


FIGURE 6

FILLING WITH WATER

1. Remove Water Tank from main unit.
2. Holding Water Tank upside-down, unscrew and remove Valve Cap by rotating it in a counter-clockwise direction (FIGURE 7-A).
3. Fill Water Tank with water through Valve Cap hole. At full capacity, the Water Tank holds 78 oz (2,307 ml) of water, and will provide a continuous steam time of approximately 80 minutes. For quick steaming tasks, a smaller amount of water can be used.

NOTE: In order to minimize potential mineral build-up and prolong the life of your Stand Garment Steamer, distilled or de-mineralized water is recommended.

CAUTION: Only water and vinegar should be used in unit – other chemicals or cleaning agents may cause internal damage. Do not attempt to substitute any other water tank for the one designed for use with this unit.

4. Replace Valve Cap by rotating it in a clockwise direction.
5. Place Water Tank back onto main unit (FIGURE 7-B). The sound of water flowing from Water Tank into Water Reservoir should be audible for a short period of time.

NOTE: Water Tank can be removed and refilled at any time during operation – there is no need to turn unit off or allow any cooling period.

IMPORTANT: Do not attempt to operate unit with an empty Water Tank.

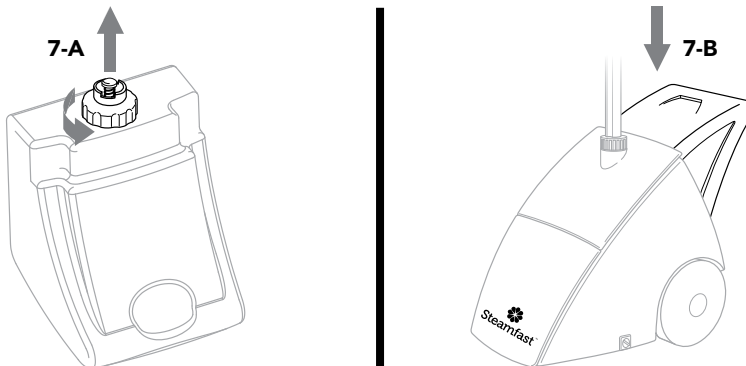


FIGURE 7

GENERAL OPERATION

NOTE: Be sure that Water Tank has been filled and, if desired, the Fabric Brush or Crease Tool is connected before following these steps.

1. For first-time use, remove protective plastic cover that is shipped on electrical plug. Plug power cord into a convenient electrical outlet.

CAUTION: This unit uses a grounded electrical plug with three prongs. This plug will fit into a wall outlet only one way. If the plug does not correctly fit in the outlet, contact a licensed electrician to install a proper outlet. Do not attempt to alter plug or circumvent this safety feature in any way.

2. Set Lighted On/Off Switch to "ON" position, and verify that switch is illuminated.
3. After approximately 45 seconds of heating time, unit will begin producing a flow of steam from Steam Nozzle.

NOTE: It is common for the unit to produce gurgling sounds and small amounts of water during the first few minutes of steaming. This is due to water condensation inside cold Hose, and should be reduced as the Hose heats up.

4. Once steam flow is steady and excess condensation has been removed from Hose, you may proceed with your steaming tasks. Refer to **Fabric Steaming** section on Page 11 for more information about steaming garments and other fabrics.

CAUTION: Always be sure that Steam Nozzle is pointed in a safe direction (away from yourself, other people, pets and plants) when steaming.

5. When you are finished using the Stand Garment Steamer, immediately set Lighted On/Off Switch to "OFF" position and unplug power cord from electrical outlet. Refer to **Storage & Care** on Page 12 for proper cleaning and storage procedures.

USING GARMENT CLIP

1. Make sure Garment Clip is properly connected to Telescopic Pole (refer to Page 8 for details).
2. Hang garment on unit, using either the Hanger or Hanger Hook.
3. Open one of the clasps and insert one side of the garment. Repeat for other clasp/side.
4. Slide Garment Clip down towards bottom of Telescopic Pole, until pants are pulled taut.
5. Proceed with steaming. Using the Crease Tool is recommended for creating crisp creases.

USING CREASE TOOL

1. Make sure Crease Tool is properly connected to Steam Nozzle (refer to Page 8 for details).
2. Hang garment on unit, using either the Hanger or Hanger Hook.
3. Press in on lever to open Crease Tool.
4. Insert edge of fabric between face of Steam Nozzle and Crease Tool. Release lever to close Crease Tool.
5. While pulling on bottom of garment to stretch it taut (either by hand or using the Garment Clip), slowly pull Steam Nozzle downward along edge of fabric.

NOTE: It is recommended to start at top of garment and pull Steam Nozzle downward.

6. Press in on lever again to open Crease Tool and release fabric. Repeat **STEPS 3-6** as necessary.

FABRIC STEAMING

STEAMING GARMENTS:

1. To expand Hanger for use, fold the two arms upward until they lock into place. A garment may now be placed on the Hanger.
2. Alternatively, place garment on a clean, rust-free clothes hanger. Place hanger (with garment) around Hanger Hook (FIGURE 8).

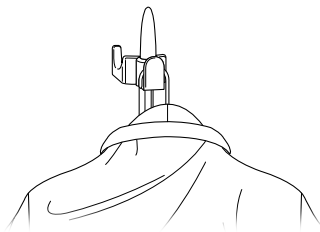


FIGURE 8

CAUTION: Use care when handling garments hanging on unit. Pulling on the garment with too much force may cause the unit to tip over.

3. Direct Steam Nozzle towards bottom of garment. Steam will rise along inside and outside of fabric, removing wrinkles. Slowly slide Steam Nozzle vertically, from bottom to top of garment (FIGURE 9).

NOTE: Do not allow kinks to form in Hose at any time during use.

4. Direct Steam Nozzle away from garment and smooth fabric with your free hand.
5. Repeat STEPS 3 & 4 as necessary until fabric is fresh and wrinkle-free.

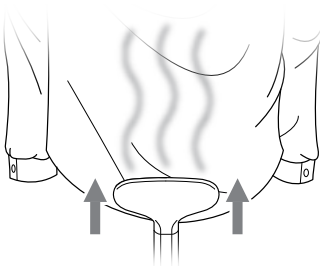


FIGURE 9

GENERAL STEAMING TIPS:

- For most effective results, hold Steam Nozzle within 1/2" of fabrics, or press it directly against surfaces.
- Curtains and draperies can be steamed while still hanging.
- To remove wrinkles from towels, handkerchiefs and napkins, drape them over a rod or towel rack and gently steam them.
- Heavier fabrics may require repeated steaming to achieve desired results.
- To remove exceptionally stubborn wrinkles, steam both sides of fabric.
- Be especially careful when steaming any delicate fabrics that may be damaged by heat or water spotting.
- To remove particles like lint, hairs and loose threads, connect the Fabric Brush to the Steam Nozzle.

PROPER STORAGE

Preparing your Stand Garment Steamer for storage is quick and simple. When you have finished your steaming tasks, follow the steps listed below.

1. Set Lighted On/Off Switch to “OFF” position, and unplug power cord from electrical outlet.
2. Allow unit to cool (15 minutes for complete cooling).
3. Bring unit to a convenient sink or tub.
4. Remove Water Tank from unit. Unscrew Valve Cap and drain all remaining water from Water Tank. Replace Valve Cap when finished.
5. Open Drain Plug and drain all remaining water from Water Reservoir to prevent overflowing during your next use. Securely replace Drain Plug and place empty Water Tank back onto main unit.
6. For storage convenience, you may wish to collapse Telescopic Pole to its most compact height (refer to Page 7 for details). You may also collapse the Hanger by pressing the center button and folding the arms down.
7. Loosely bundle power cord and store Stand Garment Steamer in a cool dry location.

CARE & MAINTENANCE

A common maintenance need for steam appliances is the removal of build-up caused by high mineral content in many municipal water supplies. **The best way to minimize mineral build-up is to use distilled or de-mineralized water during every use of your Stand Garment Steamer.**

If distilled or de-mineralized water is unavailable, regular tap water may be used. However, the resulting mineral build-up may limit the effectiveness and reduce the overall life of your Stand Garment Steamer. To prevent this, it is recommended to de-mineralize the boiler after 30-40 uses.

To remove mineral build-up:

1. Set Lighted On/Off Switch to “OFF” position and unplug power cord from electrical outlet.
2. Allow unit to cool (15 minutes for complete cooling).
3. Bring unit to a convenient sink or tub.
4. Remove Water Tank from unit. Unscrew Valve Cap and drain all remaining water from Water Tank.
5. Open Drain Plug and drain all remaining water from Water Reservoir. Securely replace Drain Plug.
6. Fill a measuring cup (**not included**) with 12 oz (355 ml) vinegar.
7. Pour vinegar into Water Tank, and replace Valve Cap. Place Water Tank back onto main unit.
8. Allow vinegar to flow into Water Reservoir / Boiler and soak for 30-40 minutes.
9. Plug power cord into an electrical outlet and set Lighted On/Off Switch to “ON” position. Allow unit to steam until the Water Tank is emptied. **CAUTION: Do not allow unit to continue running with an empty Water Tank.** Set Lighted On/Off Switch to “OFF” position.
10. Open Drain Plug and drain any remaining cleaning solution from Water Reservoir. **CAUTION: Leftover solution will still be hot.** Securely replace Drain Plug.
11. Pour 8 oz (236 ml) of warm tap water into Water Tank and place tank onto main unit. Open Drain Plug and drain water from unit, then securely replace plug.
12. When finished, unplug power cord from electrical outlet. Continue with normal storage procedure, as outlined in **Proper Storage** section above.

PROBLEM	POSSIBLE CAUSE	SOLUTION
Unit fails to heat up. Lighted On/Off Switch DOES NOT illuminate when set to "ON" position.	Unit is not plugged in.	Plug power cord into electrical outlet.
	Household circuit breaker / ground fault interrupter has tripped or blown a fuse.	Reset circuit breaker / ground fault interrupter, or replace fuse. For assistance, contact a licensed electrician.
	Unit is damaged or otherwise in need of repair.	Immediately cease usage and unplug. Contact Consumer Service for assistance (see below for details).
Unit fails to heat up. Lighted On/Off Switch DOES illuminate when set to "ON" position. NOTE: Always allow sufficient time for unit to heat up and begin producing steam.	No water in unit.	Refer to Filling With Water procedure on Page 9 to fill unit with water.
	Mineral build-up in unit.	Refer to Mineral Build-up section on Page 12 for cleaning procedure.
	Unit is damaged or otherwise in need of repair.	Immediately cease usage and unplug. Contact Consumer Service for assistance (see below for details).
Excessive gurgling in Hose and Steam Nozzle / water drips from Steam Nozzle.	Condensation build-up inside of Hose.	Some gurgling is a natural effect of the steaming process. For excessive gurgling or dripping water, point Steam Nozzle downward and shake thoroughly to remove excess water droplets.
Steam output is weak or intermittent.	Water level in Water Reservoir is running low.	Refer to Filling With Water procedure on Page 9 to refill unit with water.
	Mineral build-up in unit.	Refer to Mineral Build-up section on Page 12 for cleaning procedure.

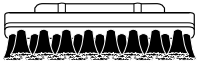
PARTS & ACCESSORIES

When ordering replacement parts and accessories for your Stand Garment Steamer, you may refer to the part numbers below. Parts and accessories may be ordered through our Website:

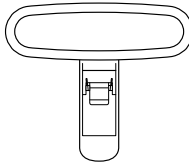
www.steamfast.com

You may also contact Consumer Service directly:

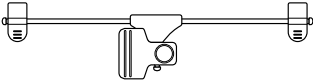
consumerservice@steamfast.com or **1-800-711-6617**



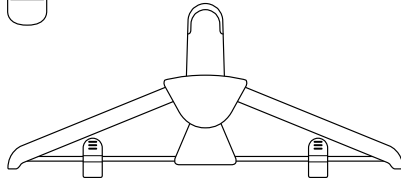
FABRIC BRUSH
A540-001R-



CREASE TOOL
A540-002R-



GARMENT CLIP
A540-004R-



HANGER
A540-003R-

Steamfast, a division of Vornado Air, LLC. Steamfast warrants to the original consumer or purchaser this Steamfast ("Product") is free from defects in material or workmanship for a period of two (2) years from the date of purchase. If any such defect is discovered within the warranty period, Vornado, at its discretion, will repair or replace the Product at no cost.

For warranty service: Call 1-800-711-6617 or email consumerservice@steamfast.com to obtain a Return Authorization ("RA"). Please have or include your Product's model number and serial number, as well as your name, address, city, state, Zip code, email, and phone number when contacting Vornado for warranty service. To file a contactless warranty claim, visit www.steamfast.com/contact

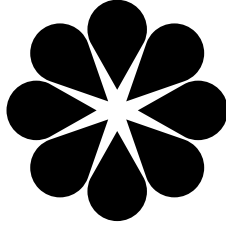
After receiving the RA, ship your Product to: Vornado Air LLC Attn: Warranty & Repair 415 East 13th Street, Andover, KS 67002. For your convenience, please have your model number and serial number when contacting Vornado with service inquiries. To ensure proper handling, packages must be clearly marked with the RA number. Packages not clearly marked with the RA number may be refused at the receiving dock. Please allow 2–3 weeks for warranty service and return of your Product after the Product is received.

This warranty does not apply to defects resulting from abuse of the Product, modification, alteration, mishandling, improper maintenance, commercial use or repair or service of the Product by anyone other than Vornado; damages which occur in shipment or are attributed to acts of God. Improper product use, which includes using an external device that alters or converts the voltage or frequency of electricity, or shipping a Vornado product to a country not intended for use will void all warranties. Any unauthorized product modification, repair by unauthorized repair center or use of non-approved replacement parts is not recommended and any consequences will not be covered by support services or product warranties.

The product warranty will be honored only on models that are being used in the country intended. REPAIR OR REPLACEMENT AS PROVIDED UNDER THIS WARRANTY IS THE EXCLUSIVE REMEDY OF THE CONSUMER. VORNADO SHALL NOT BE LIABLE FOR ANY INCIDENTAL OR CONSEQUENTIAL DAMAGES FOR BREACH OF ANY EXPRESS OR IMPLIED WARRANTY ON THIS PRODUCT. EXCEPT TO THE EXTENT PROHIBITED BY APPLICABLE LAW, ANY IMPLIED WARRANTY OF MERCHANTABILITY OR FITNESS FOR A PARTICULAR PURPOSE ON THIS PRODUCT IS LIMITED IN DURATION TO THE DURATION OF THIS WARRANTY. Some states do not allow the exclusion or limitation of incidental or consequential damages, or allow limitations on how long an implied warranty lasts, so the above limitations or exclusions may not apply to you. This warranty gives you specific legal rights, and you may have other rights that vary from state to state. The manufacturer assumes no responsibility for damage or injury caused by failure to follow these instructions, improper product use or unauthorized product modifications. Any such actions will invalidate the product warranty.

All company names and product names are trademarks of their respective owners. ©All rights reserved. All technical information, data and instructions for the installation, connection and operation contained in these instructions for use correspond to the latest available information at time of printing. The contents of this manual may differ slightly from the actual product. Observe any additional supplements.

© 2023 Vornado Air, LLC. Andover, KS 67002, U.S. Specifications subject to change without notice. Steamfast® is a trademark owned by Vornado Air, LLC. Manufactured in China.



SteamfastTM

Steamfast

415 East 13th, Andover, KS 67002

1-800-711-6617 | steamfast.com | consumerservice@steamfast.com